



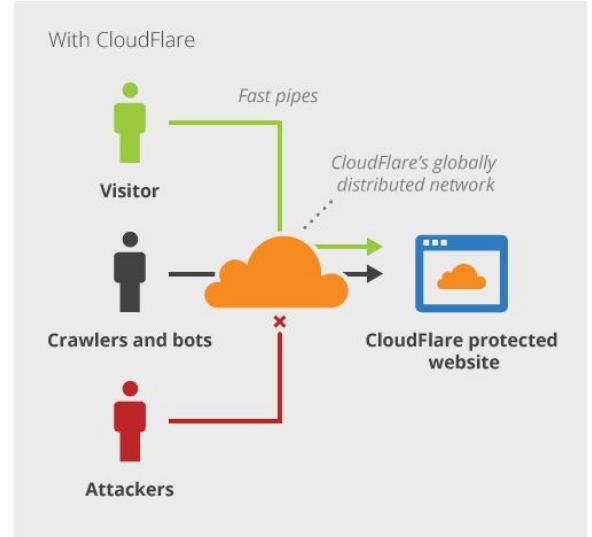
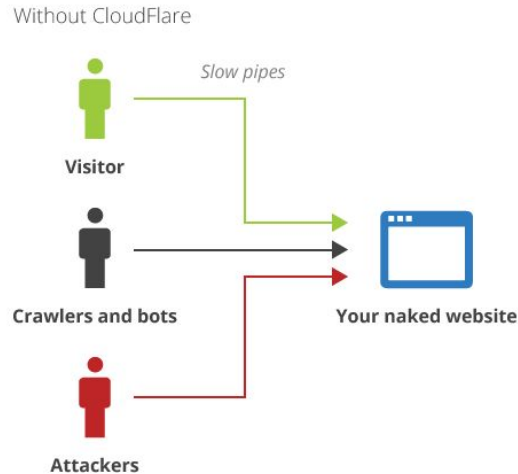
# Life of Cloudflare's operation

Frankie Hui

# What is Cloudflare?

Cloudflare makes websites faster and safer using our globally distributed network to deliver essential services to any website

- Performance
- Content
- Optimisation
- Security
- 3rd party services
- Analytics



## Some numbers...

- 100+ PoPs
- 50+ countries
- 156 Internet exchanges
- 4 network hardware vendors
- 5 network device OS

How to make our life easier?

SALT + NAPALM

# How to make our life easier?

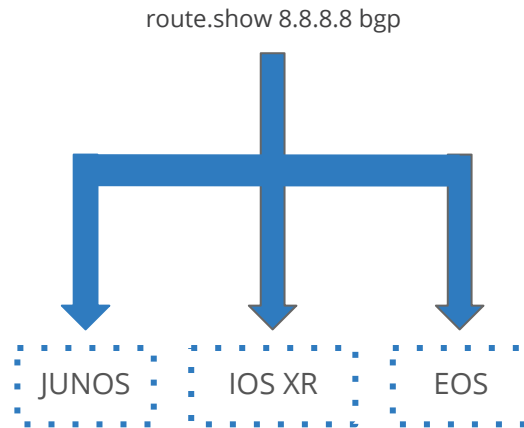
## SALT + NAPALM

NAPALM is a network automation tool  
which support multi-vendors

Salt is a configuration  
management software and  
remote execution engine

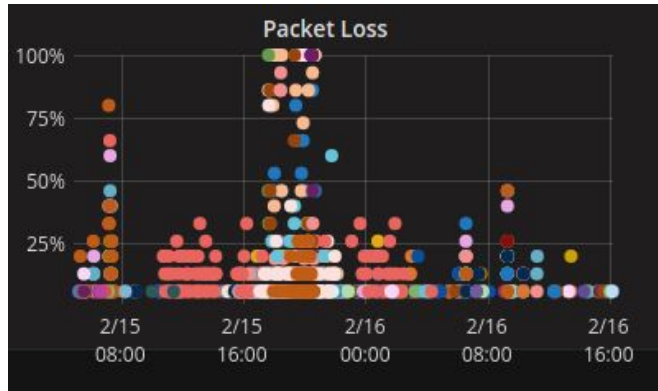
# Universal command

- Same command for different hardware vendors with different operating systems
- We can “search” thing like IP address/mac address/circuit ID very easily
- We can execute a command in a region

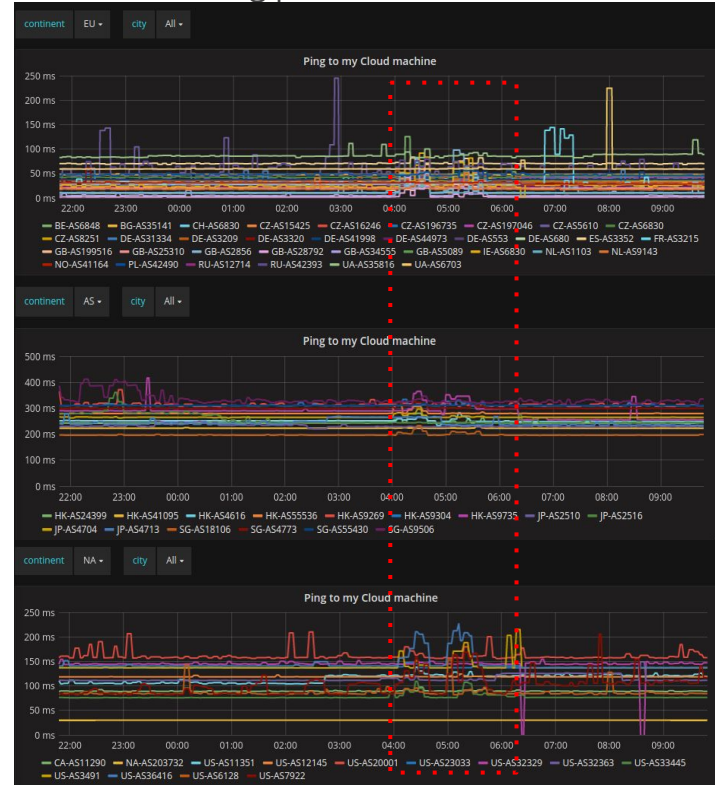


# Improve SLA

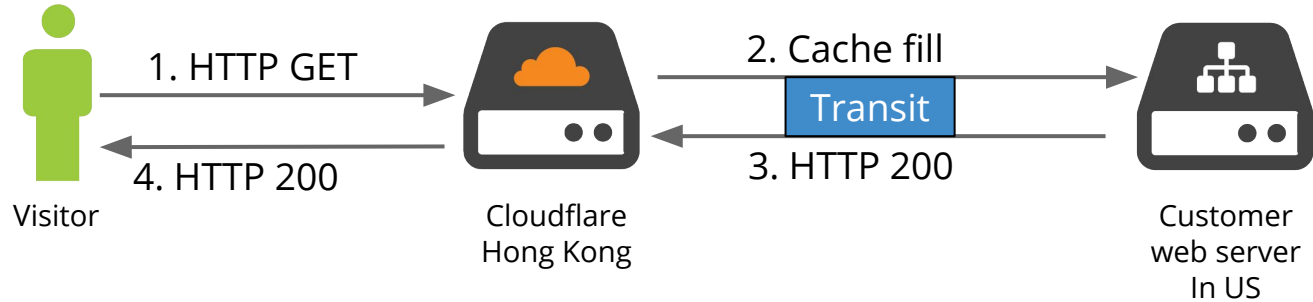
- Internet is fragile



- Cloud hosting provider is not that stable

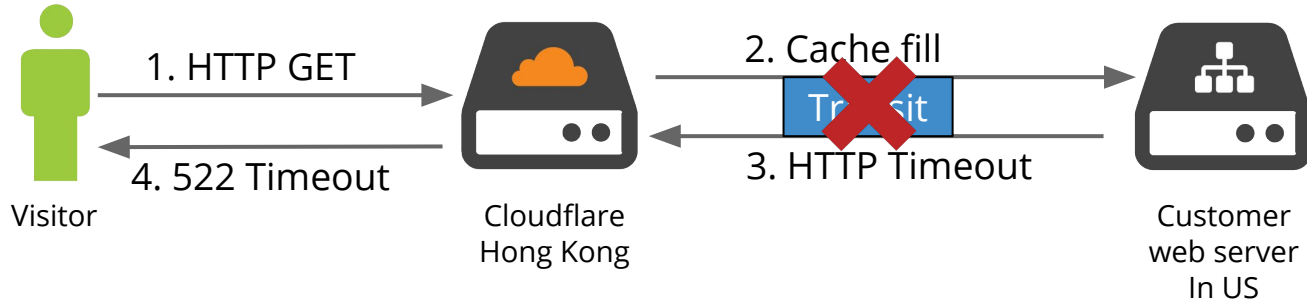


# Life of a request



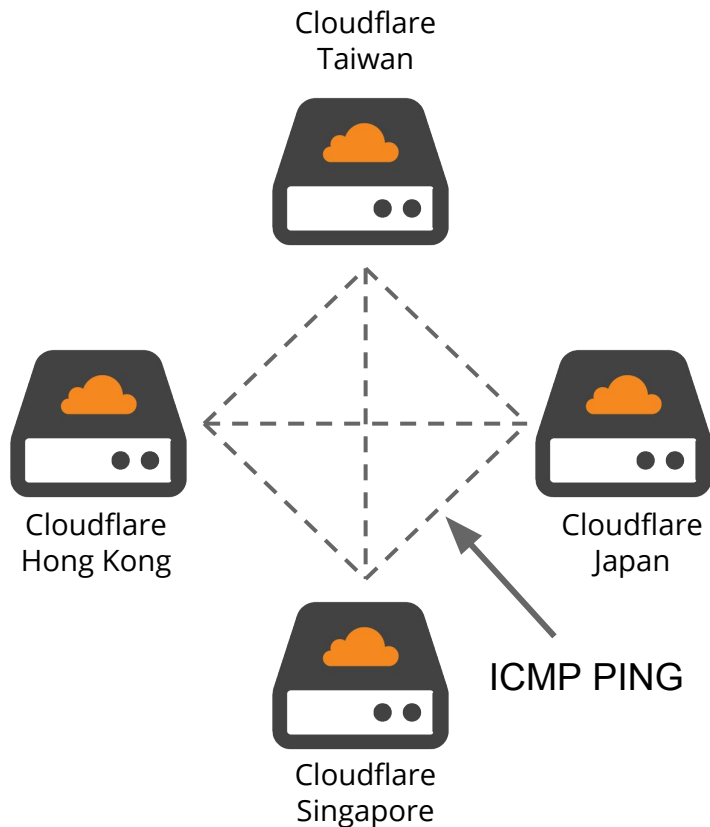


# Life of a request during packet loss



# How we fix it?

- We use configured a mesh IPSLA ping test in all our routers via salt
- E.g. Transit A in HKG -> Transit A in SIN , Transit A in HKG -> Transit B in SIN
- If packet loss reach certain threshold, we will disable that Transit or PoP
- A reliable transit means more Happy customer :)

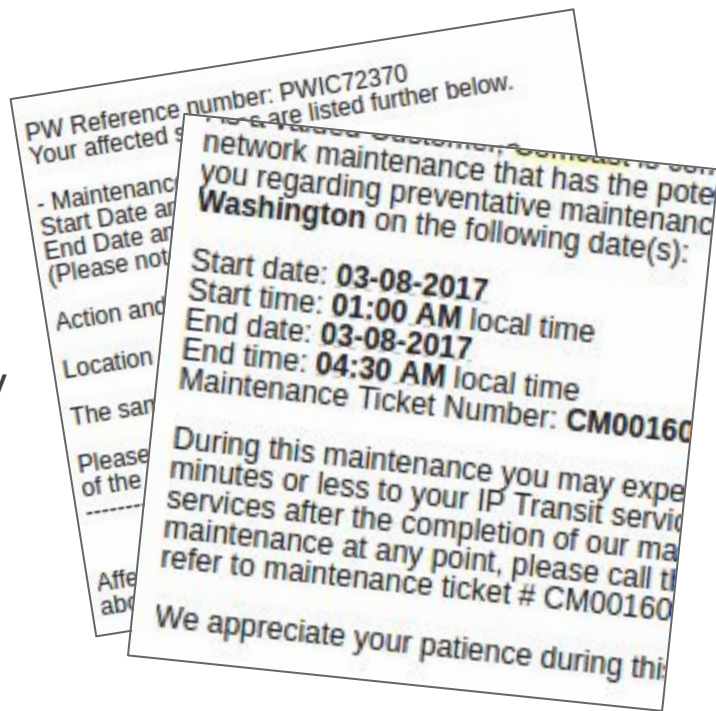


# Peering DB

- >100 peering sessions in a router
- Traditional way to deal with peering
  - Copy IP/ASN from peering email
  - Login to a peering router
  - Paste configuration that you edit in “notepad”
- What are we doing?
  - Pull peering information from peeringdb and push!

# External Maintenance

- In Jan 2017, We received 60 maintenance notification emails from our service providers
- Traditional way to deal with maintenance
  - Add an event in calendar manually
  - Enable/Disable circuit manually
- What are we doing now?
  - Parse the mail with script
  - Add an event in calendar automatically
  - Enable/Disable circuit via salt



# What 's next?

- Self-healing?
  - Poor light level
  - Port error
  - LACP timeout
- BGP sessions fix?
  - Maximum prefix limits

Questions?